

## General technical features

products: Futura

design: Modoluce R&D 2009

### Finiture

Colori



White

Diffuser in  
polyethylene, metal  
structure

Metal parts  
protected with  
resistant polyester  
coating



IP31



## Technical features



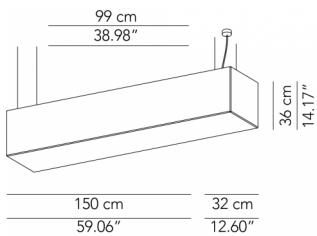
products: Futura Pendant lamp - Letter I

design: Moduluze R&D 2009

---

<b>Pendant lamp - Letter I</b>	ø 150 x 32 x 28 cm cm 25 Kg	lamp type 5 E27 42 W luminous efficacy DIM	FIOESO150D01
--------------------------------	-----------------------------------	--	--------------

---



## General technical features

products: Futura

design: Modoluce R&D 2009

### Finiture

---

Colori



White

---

Diffuser in  
polyethylene, metal  
structure

---

Metal parts  
protected with  
resistant polyester  
coating



IP31

---



---

Technical features

products: Futura Lighted seat - Letter I

design: Modoluce R&D 2009

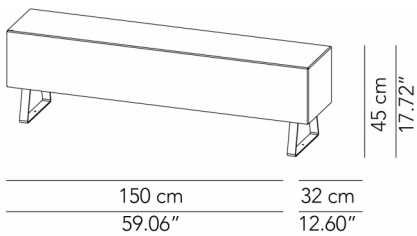
---

**Lighted seat - Letter I**

ø 32 x 150 x 45 cm lamp type 5 E27 28 W  
luminous efficacy  
DIM

FIOEPA150D02

---



## General technical features

products: Futura

design: Modoluce R&D 2009

### Finiture

---

Colori



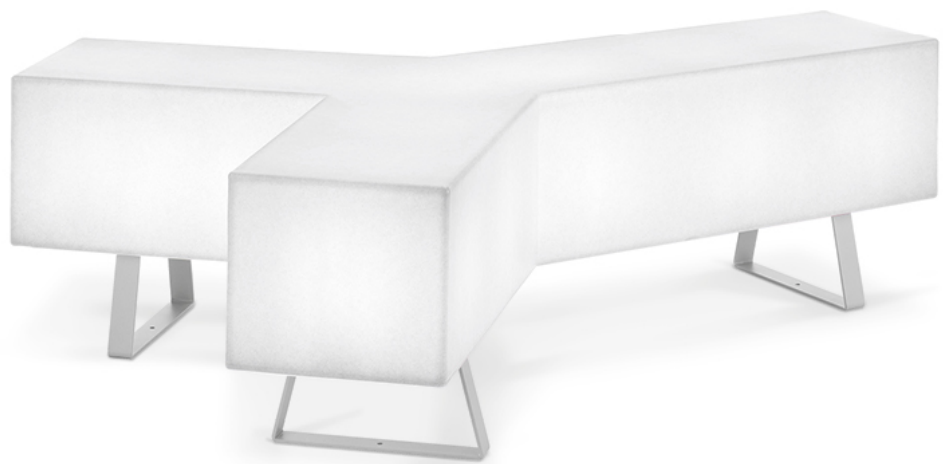
White

---

Diffuser in  
polyethylene, metal  
structure

---

Metal parts  
protected with  
resistant polyester  
coating



IP31

---



Technical features



products: Futura Lighted seat - Letter Y

design: Modoluce R&D 2009

---

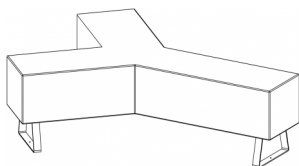
**Lighted seat - Letter Y**

ø 120 x 150 x 45  
cm

lamp type 8xE27  
max watt 28 W HES

FYOEPA150D02

---



150 cm  
59.06"

45 cm  
17.72"